



SCHOOL PROSPECTUS



Compiled: January 2025

Welcome to Lionel Walden Primary School

ABOUT OUR SCHOOL



At Lionel Walden Primary School, we are proud to provide a vibrant, inclusive, and nurturing environment where every child feels valued, supported and inspired to achieve their full potential. Our committed team of staff and governors work closely with parents and carers to ensure our pupils receive an outstanding education and remain safe and happy.

Relationships between home and school are central to the success of our children, both academically and emotionally. Our motto, "Putting children first; progress through partnerships," encapsulates the essence of our ethos and the shared vision of our community.

Lionel Walden Primary School is committed to safeguarding and promoting the welfare of children and young people and expects all staff and volunteers to share this commitment. Applicants will be subject to an enhanced DBS check.

Location

The school is situated in the charming Fenland village of Doddington, Cambridgeshire. Built in 1877, it has undergone substantial development over the years to expand and accommodate the growing need for places. Lionel Walden Primary School enjoys a picturesque and community-focused setting. The larger towns of March and Chatteris are just five miles away, with pupils primarily transitioning to Cromwell Community College in Chatteris or Neale Wade Academy in March.



Organisation

Lionel Walden is a Local Authority maintained school. We are a one-form entry primary school with approximately 30 children per class, providing a close-knit and supportive learning environment. Currently we have 209 children on role. The on-site Pre-School offers a seamless transition into Reception, ensuring that our youngest learners are already familiar with the school and its dedicated staff.

Staffing

The school is led by a passionate Headteacher and a supportive Deputy Headteacher. Our teaching team includes a mix of full-time and part-time Qualified Teachers, complemented by experienced Teaching Assistants deployed across the school. A Higher Level Teaching Assistant (HLTA) coordinates support staff and contributes to PPA cover, while our skilled SENCO ensures that every child's learning needs are met.

Our School Community

Lionel Walden Primary School thrives on the support and enthusiasm of our community. From workshop mornings and class assemblies to our Summer Fairs and Bingo evenings, school events are always well attended. Our active School Association works tirelessly to fundraise for enhancements that enrich the school experience for our children.



OUR VALUES AND VISION

At Lionel Walden Primary School, our core values of being **READY, RESPECTFUL, AND SAFE** underpin everything we do. These principles guide our teaching, interactions, and approach to developing well-rounded, confident learners who are equipped to thrive in an ever-changing world.

Ready: We empower children to be confident and enthusiastic learners, prepared to face challenges with curiosity and resilience. Through our focus on developing strong foundations in literacy, numeracy and oracy, we ensure that every child is equipped with the skills and knowledge needed to succeed in the classroom and beyond. We embrace a culture of high expectations, encouraging children to be inquisitive, independent and ready to take ownership of their learning journey.

Respectful: Respect is at the heart of everything we do. We cultivate an environment where all members of our school community are treated with kindness, understanding and dignity. Our diverse and inclusive curriculum encourages children to appreciate different perspectives and celebrate the uniqueness of others. We believe that by promoting respectful relationships, children develop empathy, teamwork and the ability to contribute positively to the world around them.

Safe: We prioritise the safety and well-being of our children, both online and offline. Our commitment to creating a secure and supportive learning environment means that every child can feel safe to express themselves, take risks and explore new ideas. We teach children the importance of staying safe in all aspects of life, from their physical environment to their digital presence, preparing them to be responsible citizens in an ever-evolving world.

Together, we ensure that every child is supported to achieve their full potential and to develop the character and confidence to succeed.



OUR SCHOOL CONTEXT

Lionel Walden Primary School serves a diverse and dynamic community. We have 209 children on role, with an additional 30 children in our Pre-School. Approximately three-quarters of children come from within catchment and live in Doddington. The remaining come from the neighbouring villages of Wimblington and Benwick, and some from a little further afield (March and Chatteris)

- 16% of pupils receive Pupil Premium funding
- 14% are eligible for Free School Meals
- 13% are on the SEND register
- A number of pupils are from service families
- A very small number of children are EAL (2%)

We are dedicated to breaking down barriers to learning and providing tailored support so that every child can flourish.

OUR CURRICULUM

The curriculum at Lionel Walden Primary School is at the heart of the school. It is the vehicle we use to nurture, guide and develop our children to become eager lifelong learners. We want our children to understand that being knowledgeable and curious about the world around them will open their minds to possibilities and doors to avenues that can enrich their lives now and in the future. We do this by thinking hard about what we want our children to leave Lionel Walden Primary School with.

Through our curriculum, we intend to provide a challenging and engaging educational experience for all children that promotes a love of learning and prepares them for success in the 21st century. We aim to instil in our children a strong sense of curiosity, creativity and critical thinking, and to equip them with the knowledge, skills and values necessary to succeed in a rapidly changing world.



To achieve this, we will:

- Provide a broad and balanced curriculum that encompasses all core subjects as well as a focus on our local curriculum and extracurricular activities.
- Provide opportunities for all children to develop their skills in problem-solving, communication, collaboration and creativity.
- Incorporate technology and digital literacy across the curriculum, to ensure that children are prepared for the digital age.
- Foster a culture of respect, kindness and inclusivity in which all children feel safe and valued.
- Encourage a growth mindset and promote a culture of learning from mistakes.
- Provide a range of support and resources, to ensure that all children are able to reach their full potential.

Our curriculum is underpinned by the teaching of basic skills, knowledge, concepts and values. We understand the importance of getting the basics right first as these are the foundations in which further knowledge and skills are built upon. We know that giving children knowledge allows them to think in richer more creative ways, pulling on prior knowledge to create links and using this to think deeper. Having a thirst for wanting to understand more is what we are aiming for so that our children can become lifelong learners.

Promoting positive values is important to us as this encourages children to take responsibility for themselves and their actions, are respectful in their way and develop resilience to help tackle life's ups and down.

Our community involvement is also an essential part of our curriculum as we celebrate local traditions such as the Doddington Carnival and our Christmas Carol Service at St. Mary's Church. Children learn invaluable skills taking part in such events and helps them feel part of the community that they live in.

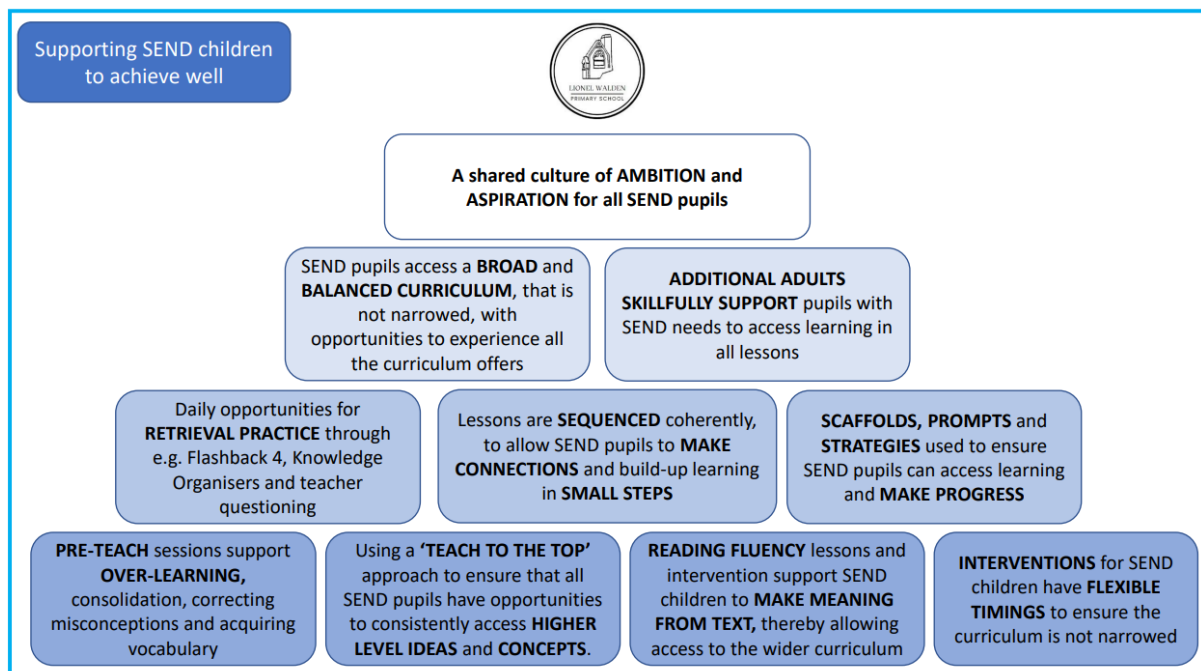
At Lionel Walden, we use the National Curriculum as the basis of our curriculum but very much add to this, ensuring that the needs of our school and community are taken into account.

Watching our children move on to their Secondary education with confidence and eagerness is what we strive for and what encourages us all to do the very best we can for them whilst they are at Lionel Walden Primary School

OUR SUPPORT FOR CHILDREN

We know that some children experience barriers to their learning. This might be in terms of communication, interaction, anxiety or low self-esteem. Some may find it trickier than others to consolidate learning longer term and hence find making connections to new learning harder. It is our goal to think carefully about how curriculum lessons are planned and delivered, so as to tackle these potential learning barriers, allowing all to progress and flourish.

We consider the individual needs of all our pupils. Sometimes pupils may have special educational needs or disabilities. Here are some ways that we support all children, including those with SEND, to achieve.



STANDARDS

We are very proud of our track record of high standards throughout the school and work hard to ensure that we balance breadth and depth of learning with a thorough grounding in the basics.

KS2 End of Year 6 Results

	2022	2023	2024	2024 Nat Avg
% of pupils working at expected standard in reading	87%	93%	81%	74%
% of pupils working at the expected standard in writing	60%	82%	75%	71%
% of pupils working at the expected standard in maths	93%	89%	78%	73%
% of pupils working at the expected standard in reading, writing and maths	60%	82%	72%	62%
Reading progress measure	+1.5	+3.93	+0.2	
Writing progress measure	-2.6	+0.88	+0.1	
Maths progress measure	+2.6	+3.76	+2.3	

2024 KS1 Phonics - 90% of children passed the Phonics check

2024 EYFS Good Level of Development - 76% gained a GLD in EYFS

ADMISSIONS

Currently, Lionel Walden Primary School has one class per year group, from Reception to Year 6.

The school's published admission number (PAN), from September 2015, is 30. Children who have their fourth birthday by 31st August are able to start in the Foundation Stage (Reception) in September of that year. The application process opens in the October/November of the preceding year through Cambridgeshire County Council.

A link to the Admissions Department at Cambridgeshire County Council can be found here:

<https://www.cambridgeshire.gov.uk/residents/children-and-families/schools-learning/apply-for-a-school-place/primary-reception-junior-or-middle-school>

The following oversubscriptions criteria are adhered to:-

Children who have a statement of Special Educational Need (SEN)/Education Health and Care Plan (EHCP) that names the school will be admitted. Those children with a statement of SEN/EHCP that does not name the school will be referred to the Statutory Assessment Team (SAT) to determine an appropriate place.

1. Children in Care, also known as Looked After Children (LAC), and children who were previously Looked After but ceased to be so by reason of adoption, or residence order (now known as a child arrangement order) or special guardianship order.
2. Children who appear to have been in state care outside of England and cease to be in state care as a result of being adopted.
3. Children living in the catchment area with a sibling at the school at the time of admission.

4. Children living in the catchment area.
5. Children living outside the catchment area who have a sibling at the school at the time of admission.
6. Children of members of staff, providing that they have been employed for a minimum of two years and/or are recruited to fill a vacant post for which there is a demonstrable shortage.
7. Children who live outside the catchment area, but nearest the school as measured by a straight line.

In cases of equal merit in each set of criteria, priority is given to children living nearest to the school as measured by a straight line.

ATTENDANCE

At Lionel Walden Primary School, we expect all children on roll to attend, when the school is in session, as long as they are fit and healthy enough to do so.

Children need to be in school every day in order to fulfil their potential. At Lionel Walden Primary School, we do all that we can to encourage children to attend and put into place appropriate procedures to support attendance when necessary.

We believe that the most important factor in promoting good attendance is the development of positive attitudes towards school. To this end, we strive to make our school a happy and rewarding experience for all children. We will also make the best provision we can for those children who, for whatever reason, are prevented from coming to school.

Excellent attendance really does make a difference to the experience a child gets at school. Missed days means missed learning, and often children find it harder when they return due to this. We appreciate that illness cannot be avoided, but we follow county guidance regarding holidays and will not authorise holidays in term time.

The school day for children begins at **8:45 am** and ends at **3:15 pm**. The school gates will open at 8:35 am to allow a prompt start to the day. **Registers will close at 8:55 am** and after such time children will be marked as late. Lateness can disrupt the start of the day for a child and we strongly encourage punctuality to ensure the best start for your child. If you find getting your child to school on time difficult, then please reach out to us for advice and support.

If you are struggling with maintaining good attendance, for whatever reason, then we strongly urge parents to talk to us. We know that a lot of families already have a supportive network of relatives, friends and community groups. However additional support is also available for families via an **Early Help Assessment**, where help can be provided from trained professionals who can provide support, signposting and access your community offer, should you feel that this would be useful to you.

THE SCHOOL DAY

Access to school

The school gates open at 8:35am to give children plenty of time to get into class by 8:45am. Pre-School will open at 8:45, when children will be met at the Pre-School gate by staff. Children will enter via their designated entrance points.

The school day starts at 8.45 a.m. and finishes at 3.15 p.m. This equates to 32.5 hours per week.

It is important that your child arrives at school on time each day to allow them to settle for registration and the first lesson. Teaching begins promptly and children need to be present for the start of the lesson.

8:35 am	School Gates open
8:45	Registration opens
8:55	Registers close
8:45 -	Morning learning sessions begin
10:20 – 10:55	15-minute breaktimes for varying year groups
12:00 - 13:00	Lunch
13:00 - 3:15	Registration followed by afternoon learning
3:15	End of school day

UNIFORM

A uniform gives a school a sense of identity, belonging and pride. It also ensures all pupils are on an equal footing, provides good value for money and minimises conflict in the morning about what clothing should be worn! We strongly encourage pupils to wear school uniform; please adhere to these guidelines at all times.

Uniform Guidelines:

Upper Body: White polo shirt or white shirt; Blue pinafore summer dress; Navy sweatshirt, cardigan or jumper. No hoodies, please.

Lower body: Black or dark grey trousers; Black, navy or grey skirt; Pinafore summer dress. No leggings or jogging bottoms.

Footwear: Black shoes are preferred, all black trainers are also fine. No coloured logos please. Sandals can be worn with socks.

PE Kits: Black or navy shorts; white T-shirt; black/navy jogging bottoms (no large branded logos) for colder weather; warm long-sleeve top for colder weather (again no large logos). Trainers. Hair bands to tie back long hair

Piercings: only simple stud earrings are allowed to be worn to school. For safety reasons, hoops or drop earrings are not permitted.

Lionel Walden has an online uniform shop through our supplier, Price & Buckland Ltd. By logging on to the link below, parents can shop for school uniform, browse the range available, place an order and pay online. All orders will be delivered to the school where they can be collected from the school office. Link: https://www.pbuniform-online.co.uk/lionelwalden?_gl=1*b4ek5h*_ga*MjIyMjQxMTQ3LjE3MTI3NDM1OTE.*_ga_1RK3W3MCFE*MTcxMjc0MzU5MC4xLjAuMTcxMjc0MzU5MC42MC4wLjA.

The range of uniform available includes cardigans, sweatshirts, fleeces and reversible coats, all with the school's logo embroidered on them.

We understand that the cost of uniforms can add up, especially with multiple children at school and therefore it is not a requirement that branded uniform is purchased. However, we would appreciate everyone adhering to the recommended school uniform style and colours. It is much cheaper to buy plain blue sweat-tops than branded ones! Uniform in our school colours is available from major supermarkets such as Asda, Tesco and Sainsburys.

PE DAYS

Children come into school wearing the correct P.E. kits on the days that they have PE. On cooler days, children should wear their school sweatshirt or jumper over their PE tops.

No jewellery should be worn in school except for small stud earrings. These must be removed independently by your child before P.E. and swimming lessons. Alternatively, they should be removed before coming to school. Further information can be found on our [uniform page](#) and our [PE page](#) on our website.

SCHOOL LUNCHES

Our school lunches are prepared and cooked each day by our own kitchen staff. Lunch time is 12 noon until 1.00 p.m.

All Reception, Year 1 and Year 2 pupils are entitled to free school meals funded by a government initiative (Universal Infant Free School Meals).

The cost for Year 3, 4, 5 and 6 pupils is £2.50 per day/£12.50 per week - we have an online payment facility - please contact the School Office for details.

Payment for all meals should be made in advance - payment for any meal not taken will be carried forward or refunded upon request. Our [School Meal Provision and Debt Management Policy](#) gives more information on this



Packed Lunches

Children are welcome to bring in their own packed lunches if they wish. Children will still eat in the main hall alongside other children.

As a school, we endeavour to promote healthy eating and would encourage you to pack a healthy lunchbox. Please do not pack fizzy drinks or high sugar/caffeine-based drinks such as Prime. Pack all foods in air tight containers. Please ensure that you pack your own cutlery e.g. spoons for yogurts. For safety reasons, no hot food in vacuum flask type containers is allowed. The temperature of food in these containers cannot be regulated and hence may cause burns.

Water is available in the hall at all times.

OUR GOVERNING BODY

The Governing Body works with the Headteacher and the staff at the school to make sure the school provides a good quality of education for all its pupils. Our Governors play a crucial role in ensuring that the school continually develops and is compliant in all that it does. They also provide a listening ear, offering advice and experience when thinking through new ideas.

The three key roles of a Governing Body are to:

- Provide strategic direction for the school;
- Work with the Headteacher to raise standards and promote the well-being of pupils;
- Ensure accountability.

Our Governors visit the school regularly to carry out monitoring visits and to keep in touch with new developments or initiatives that have been introduced.

WHAT DO OUR PARENTS SAY?

In a survey conducted during November 2024 Parents' Evenings, we asked parents their views on the school. 121 people filled in the survey. Here are the results:

- My child is happy at Lionel Walden - 97.5%
- My child feels safe at Lionel Walden - 97.5%
- The school has high expectations for my child - 86%
- My child is making good progress - 93%
- The school encourages the values of Ready, Respectful and Safe - 96%
- The school ensures that children understand how to behave well and encourages this - 95%
- I would recommend the school to another parent - 98%

EQUALITY STATEMENT

Lionel Walden Primary School is an inclusive school where we focus on the wellbeing and progress of every child and where all members of our school community are of equal worth.

We believe that the Equality Act 2010 provides a framework to support our commitment to valuing diversity, tackling discrimination, promoting equality and fostering good relationships between people. It also ensures that we continue to tackle issues of disadvantage and underachievement of different groups. As a school we welcome our duties under the Equality Act 2010. The general duties are to:

- eliminate discrimination, harassment and victimisation
- advance equality of opportunity
- foster good relations

We understand the principal of the act and the work needed to ensure that those with protected characteristics are not discriminated against and are given equality of opportunity.

A protected characteristic under the act covers the groups listed below:

age (for employees not for service provision); disability; race; sex (including issues of transgender); gender reassignment; maternity and pregnancy; religion and belief; sexual orientation; marriage and Civil Partnership (for employees)

Thank you for reading about our school and all that we have to offer. We very much invite you to visit to see our school in action and determine whether our vision and ethos is something that resonates with you. You can also find lots more information on our website:

www.lionelwalden.cambs.sch.uk

Kind regards,

Mr Steve Abey

Headteacher

Mrs Jo Dale

Chair of Governor